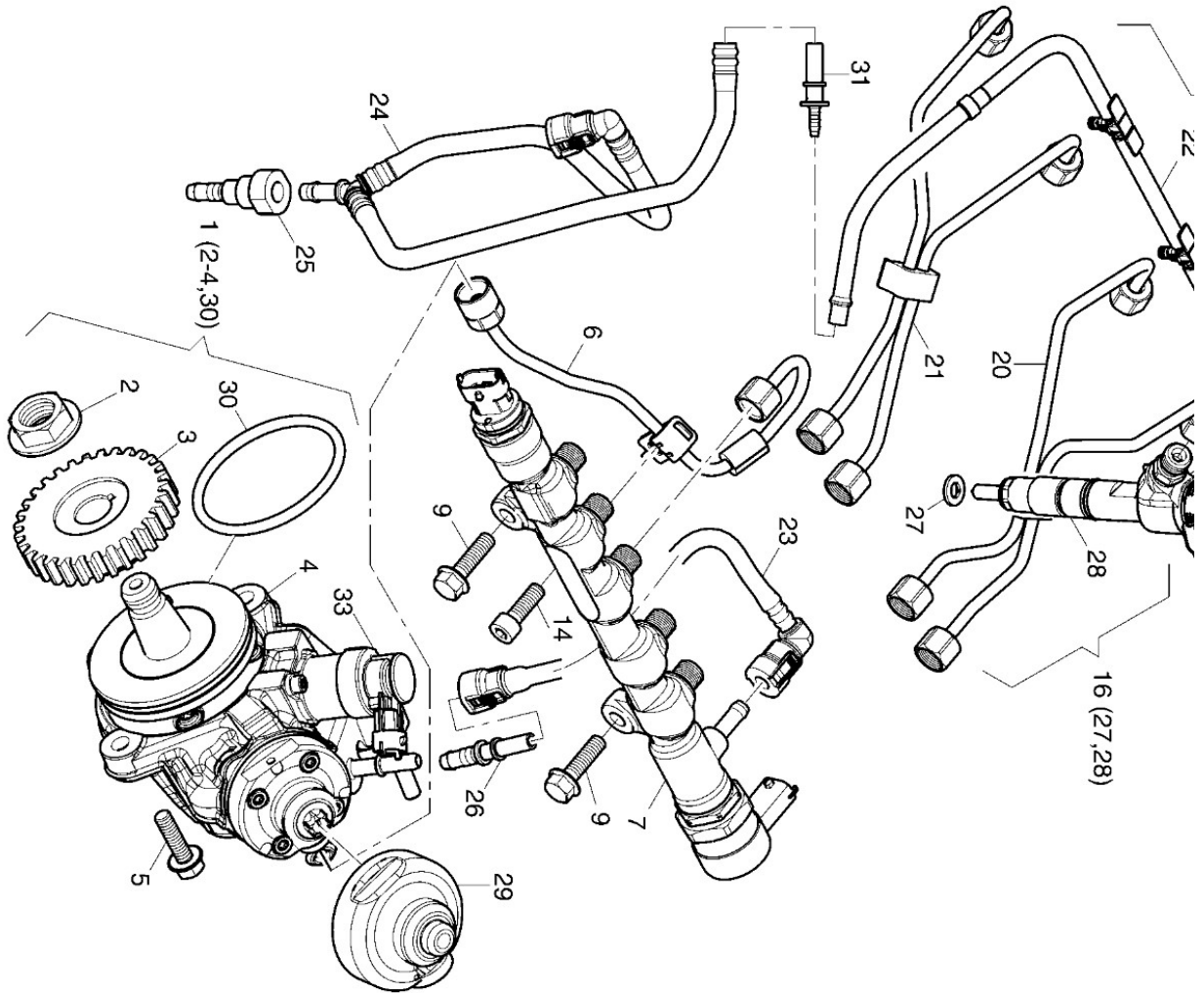


M14 Injection equipment 4 H 50 TICD.10



M14 Injection equipment 4 H 50 TICD.10

Pos.	Part no.	Description	Qty.	Notice	Add. notice
1	000002063900	HIGH-PRESSURE PUMP	1		
2	_noorder	No single order	-		
3	_noorder	No single order	-		
4	_noorder	No single order	-		
5	000050630400	HEXSCREW M8 X 30	3	M 8 X 30 DIN6921 - 8.8 A2B 6921-8.8A2B	
6	000002033700	FUEL PRESSURE PIPE PUMP-RAIL	1		
7	000004293100	HIGH-PRESSURE RAIL CPL. HFR18	1		
9	000050630400	HEXSCREW M8 X 30	2	M 8 X 30 DIN6921 - 8.8 A2B 6921-8.8A2B	
14	000050096000	HEXSCREW M 8X 18	1	M 8X 18 DIN 933 - 8.8 A3B DIN 933 - 8.8 A3C	
16	000004293700	CR-INJECTOR CR12-18-OHW	4		
17	000004300600	CLAMP FOR INJECTOR	4		
18	000004035700	WASHER	4		
19	000050148000	HEXAGON NUT M 8	4	M 8 DIN 934-8 A3B	
20	000002033800	FUEL PRESSURE PIPE RAIL-INJECTOR 1+2	1	Injector 1+2	
21	000002033900	FUEL PRESSURE PIPE RAIL-INJECTOR 3+4	1	Injector 3+4	
22	_noorder	No single order	-		
23	000002040900	FUEL RETURN LINE	1		
24	000002041000	FUEL RETURN LINE	1		
25	000050657900	QUICK CONNECT COUPLING	1		
26	000050657800	ADAPTER PIECE	1		
27	000049098400	PACKING RING	4		
28	_noorder	No single order	-		
29	000050664700	PROTECTION CAP	1		
30	000049098900	O-RING F. HIGH-PRESSURE PUMP	1	Ø 77 x 3,55	
30	000050670000	O-RING 77 X3,5 NBR	1		Old Identno: 000049098900
31	000050656000	NIPPLE ADAPTOR FITTING	1		

M14 Injection equipment 4 H 50 TICD.10

Pos.	Part no.	Description	Qty.	Notice	Add. notice
32	000002569100	FUEL LEAK-OFF PIPE+ADAPTER	1		
33	000049107100	FUEL METERING UNIT	1	Metering unit	